



High-Tech Solutions & Design  
On Shore Systems  
Marine Systems

### High tech shipboard and on shore systems

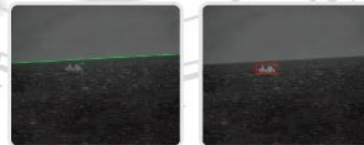
*Extreme Exclusive* is a highly innovative and dedicated company, specialized in custom made systems. By using engineering creativity, the latest materials and state of the art technology we can guarantee products and systems that are top-shelf quality. *Extreme Exclusive* possesses extensive knowledge of shipboard and on shore systems and has years of experience with their production. We know all existing possibilities and never cease to explore new ones. In doing that, we open up new horizons for you, as well for us.

All our products will be specially designed to fulfill your wishes and will be developed for that single specific application. The *Extreme Exclusive* team assures you that "impossible" really "does not exist".



### TASS + Triple-A Surveillance System

The latest autonomous micro Unmanned Aerial Vehicles (UAV's) are equipped with artificial intelligence features for GPS-controlled flight, according to a pre-programmed but adaptable flight plan, features fully automatic takeoff, auto-return to starting point and automated landing and docking. A derivative of this technique is computer aided visual flight control. The onboard camera observes and recognizes landscape features and steers the UAV to its target.



For shipboard systems *Extreme Exclusive* combines this technology with Underwater Robots as Remotely Operated Vehicles (ROV's), Focused Infrared Horizon Scan and other systems, to create an integration platform that can be used to interconnect system components and algorithms.

The major advantage of the TASS system is to display and fuse data from multiple sensor sources and the high flexibility of the software framework to build a variety of surveillance applications. The Drones and ROV's will receive their task from the TASS base station and will do their job autonomously.

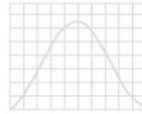


High-Tech Solutions & Design  
On Shore Systems  
Marine Systems

### UAV's + ROV's

The Unmanned Aerial Vehicles and Underwater Robots are active for surveillance purposes when the TASS system orders a task. When the system is not active with security tasks, you can use several other options. The TASS system will show the exact positions of the tender boat, jet skis and other equipment around the yacht. The cameras on the UAV's and ROV's can be used for making films and pictures of their activities. Another option is using the ROV for swimming and diving support and filming.

A big advantage is the flexibility in the choice of the vehicles. All open source systems and systems of trademarks for professional use can be prepared by *Extreme Exclusive* for integration in a complete TASS system.



Horizon Scan

Radar Signal Analyzing will give you information about tracking of small boats. With the TASS horizon scan, done by optic and acoustic sensors, analysis of the signals will result in detailed information. Part of this system is software for Image Stabilization, Image Processing and Pattern Recognition. When an object breaks the perimeter of the TASS scanner, algorithms for image based stabilization, fusion of image stabilization and inertial sensor processing and classification will give you the information to decide about activating an UAV or ROV to gather more information by the live streaming cameras or other sensors on board of the vehicles.



### Diver Detection Sonar + Anti-Pirate System

Ask *Extreme Exclusive* for several other applications and integration of sonar or other sensor systems. A Diver Detection Sonar will give an alarm as usual, but the task can be sending a ROV for further inspection. The pictures and the sensor information of the TASS system will give you all essential information about the situation. The system's output will be tasks for the vehicles, but the information can also be used for decision-making when using Anti-Piracy equipment as a Dazzle Gun, an Optical Laser Distracter or a Robot Anti-Pirate Boat. While operating the TASS system will give you the necessary feedback.

Installation on board and integration in Maritime Personal Assistant (MPA®) by:



tijssen elektro

[www.tijssen-elektro.nl](http://www.tijssen-elektro.nl)

Extreme Exclusive B.V.  
P.O. Box 7105  
9701 JC Groningen  
The Netherlands

Phone: +31 50 313 8722  
Fax: +31 50 313 8233

[www.eex.eu](http://www.eex.eu)  
[info@eex.eu](mailto:info@eex.eu)